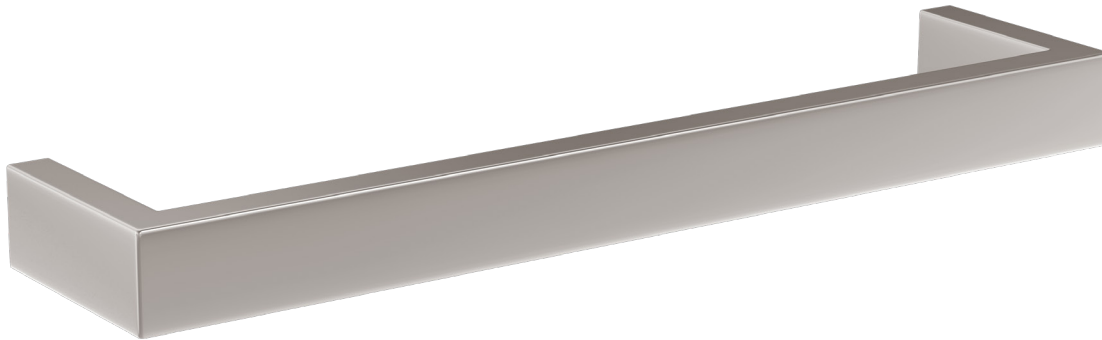


## Towel Bars - Square double mounted



The electric towel bar collection has been beautifully designed to complement any bathroom. At only 12V, they can be installed anywhere in a bathroom.

- High quality 304 grade stainless steel.
- Patented dual self regulating heating element that is 50% more efficient.
- Safe for installation in bathrooms.
- Install multiple bars for design impact and effective towel drying.
- Designed and made in the UK.
- Hard wired to mains electricity via a suitably rated 12V transformer.

### Technical data

Code	HTB-DS-450/632
Voltage	12V SELV
Material	304 Stainless Steel
Finish	Diamon Polished Stainless
Size	W 632 x H 40 x D 100mm
Maximum output	37W
Cable length	2m
Wiring connection	Concealed
Warranty	5 years

## Product dimensions



## Sizes and finishes

Code	Description	Size (mm)	Finish	Ouput (W)
HTB-DS-450-DPS	Double Square 450mm	450 x 40 x 100	Diamond Polished	25
HTB-DS-450-BSS	Double Square 450mm	450 x 40 x 100	Brushed Stainless	25
HTB-DS-450-PLB	Double Square 450mm	450 x 40 x 100	Diamond Polished Brass	25
HTB-DS-450-BRB	Double Square 450mm	450 x 40 x 100	Brushed Brass	25
HTB-DS-450-MBK	Double Square 450mm	450 x 40 x 100	Matt Black	25
HTB-DS-450-MWT	Double Square 450mm	450 x 40 x 100	Matt White	25
HTB-DS-632-DPS	Double Square 632mm	632 x 40 x 100	Diamon polished	37
HTB-DS-632-BSS	Double Square 632mm	632 x 40 x 100	Brushed Stainless	37
HTB-DS-632-PLB	Double Square 632mm	632 x 40 x 100	Diamond Polished Brass	37
HTB-DS-632-BRB	Double Square 632mm	632 x 40 x 100	Brushed Brass	37
HTB-DS-632-MBK	Double Square 632mm	632 x 40 x 100	Matt Black	37
HTB-DS-632-MWT	Double Square 632mm	632 x 40 x 100	Matt White	37

**Available finishes**

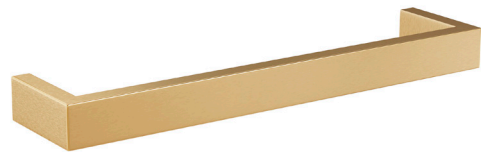
Diamond Polished Stainless Steel



Diamond Polished Brass



Brushed Stainless Steel



Brushed Brass



Matt Black



Matt White

**Care and maintenance**

Clean with a soft cloth moistened with warm, mild soapy water. Dry with a soft cloth. Do not use strong cleaners or abrasives as they can damage the finish.